

2000 – Rigging Guide

1 Before you start.

The Club 2000 is called Fizio.

The 2000 has three sails Main, Jib and Spinnaker, located in the sail store. If you are new or unsure of your abilities there is a training sail with built-in floatation to prevent the mast from sinking.



Position the boat Head to Wind.

2. The Jib

2.1 Attach Tack(Bottom) of the Jib to the furler.



2.2 Attach the Head (top) of the Jib to the wire Jib Halyard.



2.3 Hoist the Jib, until you can hook the jib tensioner through the loop in the wire Jib Halyard. **NOTE:** ensure that the rope tail is not trapped between the hook and the wire loop.



2.4 Tension the Jib until the Jib Luff (front edge) and the Shrouds are firm.



2.5 Attach the Jib Sheets to the Clew of the Jib and feed through the jib cars on either side so that it is a continuous rope across the cockpit.



2.6 Untie the Forestay from the Bow and tie it to the base of the mast.



Note : Remember to re-attach the Forestay before lowering the Jib or the mast will fall down.

3 The Main Sail

3.1 Attach the Main Halyard to the top of the main sail by passing the Bobble through a loop in the rope.



3.2 Feed the sail into the slot in the Mast.



3.3 Steadily pull on the Main Halyard to raise the Sail up the slot in the mast.



Note: it is easier if another person feeds the sail as you pull on the halyard.

3.4 When the Sail is at the very top of the mast, cleat the halyard to hold it there.

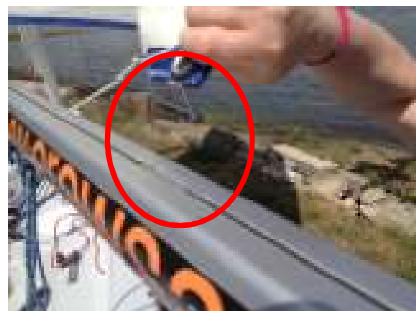


Tidy all the Mast ropes into the pocket on the spinnaker bag.

3.5 Push the Boom onto the Gooseneck on the Mast.



3.6 Insert the Slug (a bullet shaped object at the stern end of the sail) on the Clew of the Mainsail into the slot on the boom.



3.7 Draw the Slug along the slot toward the end of the boom. Feed the Outhaul through the eye in the clew.



3.8 Attach the outhaul to the end of the Boom by pressing the rope through the clip.



3.9 Tighten the outhaul to suit the conditions. 4" between the boom and the foot is typical for most conditions.



3.10 Attach the downhaul (or Cunningham) by passing the end of the rope through the eye in the sail.



3.11 Secure the Knot at the end of the Cunningham into the slot beneath the gooseneck.



4 The Rudder

The Rudder is usually stowed in a bag in the bottom of the boat.

4.1 Check that the Bung is fitted.



4.2 Place the Rudder into the Pintals, press it down until the spring clips. Then fit the ring through the hole at the bottom of the pintal to prevent the rudder from falling off.



5. Ready to sail



6. After Sail

6.1 Wash the boat with fresh water to remove salt (and any mud).

6.2 RE-ATTACH the Forestay before you lower the Jib.

6.3 Carefully **roll** the sails and place back in the bags in the Sail Store.

6.4 Replace the covers on the boat.

6.5 Tie the boat down to the chain in its berth to prevent it from being blown onto other boats during storms.